



Home Energy Conservation Act 1995

Progress Report 2013-15 on behalf of the

The Nottingham and Derbyshire

Local Authority Energy Partnership

(LAEP)

and



CHESTERFIELD
BOROUGH COUNCIL

March 2015

Jane Thomas
Private Sector Housing Manager
Chesterfield Borough Council
01246 345708
jane.thomas@chesterfield.gov.uk

Rina Jones
LAEP Manager
01629-536130
rina.jones@derbyshire.gov.uk

Nottinghamshire and Derbyshire Local Authorities' Energy Partnership (LAEP)

The LAEP is a non-statutory partnership of all 20 councils across Nottinghamshire and Derbyshire, established in 1996 and continues to provide an excellent model of how councils can work together for mutual benefit.

This report covers collective activities across the following 14 LAEP housing authorities:

Nottinghamshire

Bassetlaw District Council
Broxtowe Borough Council
Gedling Borough Council
Mansfield District Council
Newark and Sherwood District Council
Rushcliffe Borough Council

Derbyshire

Amber Valley Borough Council
Bolsover District Council
Chesterfield Borough Council
Derbyshire Dales District Council
Erewash Borough Council
High Peak Borough Council
North East Derbyshire District Council
South Derbyshire District Council

Partnership activities are delivered via a membership service and a communications service which are funded through separate subscriptions. Councils benefit from support, information and communication services and collaborate on carbon reduction, affordable warmth and sustainable energy projects, sharing expertise and best practice.

Each council is represented on the Officer Working Group (OWG) which runs the partnership and funds are held by Derbyshire County Council.

LAEP Chair's introduction

The production of this report by our Partnership, which complements the individual reports of our member councils, is an example of how our long-standing collaboration has provided huge benefit and exceptional value to our partners over the years.

In increasingly challenging times for local government, this report provides evidence of how our partnership is striving to maximise the economic, social and environmental benefits to our councils and residents through its work on home energy conservation and affordable warmth.

*Phil Keynes
Team Manager, Energy and Carbon Management
Nottinghamshire County Council*

HECA reporting

The LAEP has a collective ambition to reduce carbon dioxide and fuel poverty across the area and acknowledges the legal requirements for local government to improve the energy efficiency of residential accommodation as outlined in the Climate Change Act 2008.

The LAEP also supports the aims of the 2001 UK Fuel Poverty Strategy to eradicate fuel poverty in England as far as reasonably practicable by 2016.

All LAEP district and borough councils submitted 2013 HECA reports and have links to them on their websites.

This HECA progress report is presented in four sections and provides an update on trends, strategies and initiatives since 2013 as LAEP councils work together to reduce domestic carbon dioxide emissions and fuel poverty:

1. Baseline information across Nottinghamshire and Derbyshire
2. LAEP HECA Report 2013-15
3. Chesterfield Borough Council HECA Action Plan Progress Report 2013-15
4. Chesterfield Borough Council HECA Action Plan 2015-16

1. BASELINE INFORMATION

Baseline information on key issues enables local authorities to gauge the impact of collective and individual initiatives

- 1.1 Levels of fuel poverty
- 1.2 Domestic fuel consumption
- 1.3 Domestic carbon dioxide emissions
- 1.4 Energy Company Obligation funded measures
- 1.5 Green Deal measures

The following data has been collated from documents placed on the Department of Energy and Climate Change's website.

1.1 Levels of fuel poverty

Between 2010 and 2012 a new way of calculating the number of households in fuel poverty was introduced, temporarily running in parallel with the original definition.

In 2010 the **10% definition** was used whereby a household was in fuel poverty if it needed to spend more than 10 per cent of its income on fuel to maintain an adequate level of warmth.

From 2012 a new **Low Income High Cost (LIHC)** definition was applied which considers a household to be in fuel poverty if they have required fuel costs that are above average (the national median level) and, were they to spend that amount, they would be left with a residual income below the official poverty line.

Across Nottinghamshire and Derbyshire between 2010 and 2012 there was a small fall in the number and % of households in fuel poverty in most district and borough areas, using the original 10% definition. Using the new Low Income High Cost definition results in **fewer people being categorised as being in fuel poverty** so the total number of and % of households in fuel poverty is shown as much lower.

The following table shows levels of fuel poverty in all the district and boroughs in Derbyshire and Nottinghamshire in 2010 and 2012 (both definitions used in 2012 for comparison), taken from <https://www.gov.uk/government/collections/fuel-poverty-sub-regional-statistics>

FUEL POOR HOUSEHOLDS	2010	2012	2012	2010	2012	2012
	10% definition		Low Income High Cost definition	10% definition		Low Income High Cost definition
Local Authority	Number of fuel poor households			% Fuel poor households		
Amber Valley	9,918	9,610	7,078	19.1	17.9	13.2
Bolsover	6,564	5,635	4,153	20.6	16.8	12.4
Chesterfield	9,191	8,028	6,217	20.0	16.8	13.0
Derbyshire Dales	7,483	9,314	4,917	24.4	29.6	15.6
Erewash	8,429	7,783	6,287	17.5	15.7	12.6
High Peak	7,027	8,248	5,281	17.8	20.7	13.3
NE Derbyshire	7,876	7,656	5,239	18.6	17.4	11.9
South Derbyshire	5,867	6,077	4,393	15.5	15.3	11.0
Bassetlaw	9,334	9,341	6,193	19.7	19.2	12.7
Broxtowe	7,825	7,260	5,736	16.5	15.2	12.0
Gedling	8,085	7,754	5,522	16.2	15.4	11.0
Mansfield	8,782	7,738	5,796	19.9	16.9	12.6
Newark & Sherwood	9,221	9,504	6,311	18.9	19.1	12.7
Rushcliffe	6,818	7,471	5,367	14.8	16.0	11.5

1.2 Domestic fuel consumption

The tables below show domestic gas and electricity consumption figures from 2010 and the most recent available figures from 2013, taken from

<https://www.gov.uk/government/statistical-data-sets/gas-sales-and-numbers-of-customers-by-region-and-local-authority> and

<https://www.gov.uk/government/collections/sub-national-electricity-consumption-data>

DOMESTIC GAS CONSUMPTION	2010		2013	
	Total (GWh)	Average Household (kWh)	Total (GWh)	Average Household (kWh)
Amber Valley	808.3	15,861	742	14,422
Bolsover	773.3	15,482	439	13,788
Chesterfield	607.6	15,312	611	13,107
Derbyshire Dales	469.2	15,218	409	16,026
Erewash	745.8	15,897	653	13,411
High Peak	674.4	14,691	577	15,349
North East Derbyshire	442.5	17,637	620	14,914
South Derbyshire	717.9	14,919	495	13,960
Bassetlaw	779.4	16,544	555	13,658
Broxtowe	629.5	16,971	678	14,270
Gedling	692.1	15,855	714	14,915
Mansfield	674.1	15,852	647	14,230
Newark and Sherwood	669.4	16,383	622	14,327
Rushcliffe	759.5	17,719	707	16,226

DOMESTIC ELECTRICITY CONSUMPTION	2010		2013	
	Total (GWh)	Average Household (kWh)	Total (GWh)	Average Household (kWh)
Amber Valley	225.2	4,251	215.6	4,025
Bolsover	211.3	3,915	121.9	3,665
Chesterfield	125.4	3,688	161.6	3,425
Derbyshire Dales	188.2	5,078	146.1	4,683
Erewash	168.7	4,049	184.8	3,747
High Peak	155.5	4,215	161.0	4,042
North East Derbyshire	195.1	3,945	162.4	3,725
South Derbyshire	208.8	4,348	163.4	4,058
Bassetlaw	167.8	4,373	198.7	4,086
Broxtowe	168.5	3,813	179.2	3,755
Gedling	217.9	4,212	199.8	3,987
Mansfield	168.4	3,840	163.3	3,588
Newark and Sherwood	205.5	4,452	208.8	4,194
Rushcliffe	167.2	4,322	196.6	4,203

1.3 Domestic carbon dioxide emissions

The tables below show the domestic carbon dioxide emissions per capita in tonnes CO₂ in 2010 and 2012, the most recent figures available.

All data is taken from <https://www.gov.uk/government/statistics/local-authority-emissions-estimates>

DERBYS	Year	Industry and Commercial	Domestic	Transport	Total
		Per capita tonnes CO ₂			
Amber Valley	2010	3.2	2.6	1.9	7.7
	2012	3.1	2.5	1.8	7.4
Bolsover	2010	6.9	3.1	4.6	14.6
	2012	6.6	2.9	4.5	14.1
Chesterfield	2010	2.3	2.5	1.5	6.4
	2012	2.5	2.4	1.4	6.4
Derbyshire Dales	2010	4.1	2.8	3.4	10.3
	2012	4.1	2.7	3.3	10.1
Erewash	2010	2.1	2.4	2.3	6.8
	2012	1.8	2.3	2.3	6.4
High Peak	2010	26.6	2.5	1.7	31.0
	2012	25.5	2.4	1.7	29.7
NE Derbyshire	2010	2.3	2.6	2.5	7.3
	2012	2.0	2.5	2.4	6.9
South Derbyshire	2010	3.6	2.5	3.3	9.4
	2012	3.3	2.4	3.2	8.9
DERBYS TOTAL	2010	6.1	2.6	2.5	11.2
	2012	5.8	2.5	2.5	10.8

NOTTS	Year	Industry and Commercial	Domestic	Transport	Total
		Per capita tonnes CO ₂			
Bassetlaw	2010	2.9	2.6	3.3	8.9
	2012	3.0	2.4	3.2	8.8
Broxtowe	2010	2.8	2.4	2.7	7.9
	2012	2.1	2.3	2.6	7.1
Gedling	2010	2.2	2.5	1.0	5.7
	2012	2.1	2.4	0.9	5.5
Mansfield	2010	1.7	2.7	1.2	5.6
	2012	1.6	2.7	1.1	5.4
Newark & Sherwood	2010	4.3	2.5	3.5	10.2
	2012	4.0	2.4	3.5	9.8
Rushcliffe	2010	2.0	2.5	2.2	6.9
	2012	1.9	2.4	2.2	6.6
NOTTS TOTAL	2010	2.6	2.6	2.2	7.5
	2012	2.5	2.5	2.2	7.2

1.4 Energy Company Obligation funded measures

A new obligation on energy utility companies replaced the previous Carbon Emissions Reduction Target (CERT) at the end of March 2013. The Energy Company Obligation Phase 1 (ECO1) runs from April 2013 to March 2015.

The ECO programme provides funding for energy efficiency measures for households in hard to treat properties and vulnerable or low income households who struggle to achieve affordable warmth.

The data below shows the number of ECO funded measures installed since the beginning of ECO to 30th September 2014 and has been compiled from

<https://www.gov.uk/government/statistics/green-deal-energy-company-obligation-eco-and-insulation-levels-in-great-britain-quarterly-report-to-september-2014> Tables 1.11a) and d).

ECO OBLIGATION measures							
	Carbon Saving Target (CSO)	Carbon Savings Community (CSCO)	Affordable Warmth (HHCRO)	Total no. ECO measures delivered	All households	ECO measures per 1,000 households*	Households in receipt of ECO measures per 1,000
ENGLAND	311,600	175,591	309,600	796,791	22,542,903	35.3	28.7
E MIDLANDS	21,763	10,646	29,080	61,489	1,935,710	31.8	25.1
Derbyshire	3,535	742	4,598	8,875	338,213	26.2	20.6
Amber Valley	457	131	744	1,332	53,573	24.9	19.0
Bolsover	258	166	748	1,172	33,264	35.2	26.9
Chesterfield	831	132	712	1,675	47,180	35.5	28.8
Derbyshire Dales	114	34	169	317	31,197	10.2	7.5
Erewash	575	203	800	1,578	49,330	32.0	24.5
High Peak	270	43	470	783	39,821	19.7	17.2
NE Derbyshire	645	32	541	1,218	43,588	27.9	22.5
South Derbyshire	385	1	414	800	40,260	19.9	14.9
Nottinghamshire	4,408	1,490	5,106	11,004	340,212	32.3	25.2
Bassetlaw	498	271	750	1,519	48,631	31.2	24.4
Broxtowe	410	2	643	1,055	47,724	22.1	16.6
Gedling	671	40	755	1,466	50,096	29.3	22.1
Mansfield	619	543	1,022	2,184	45,520	48.0	36.9
Newark&Sherwood	1,236	266	592	2,094	49,778	42.1	34.9
Rushcliffe	458	2	331	791	46,771	16.9	12.7

* More than one measure installed in some homes

Measures installed

Information on which measures have been installed is not available down to local authority level. However, on a national scale government statistics show a marked decline in the rate of loft and cavity wall insulation (from all sources including ECO and Green Deal) coinciding with the switch from CERT to ECO, as illustrated in the table below, taken from <https://www.gov.uk/government/statistics/green-deal-energy-company-obligation-eco-and-insulation-levels-in-great-britain-quarterly-report-to-september-2014>

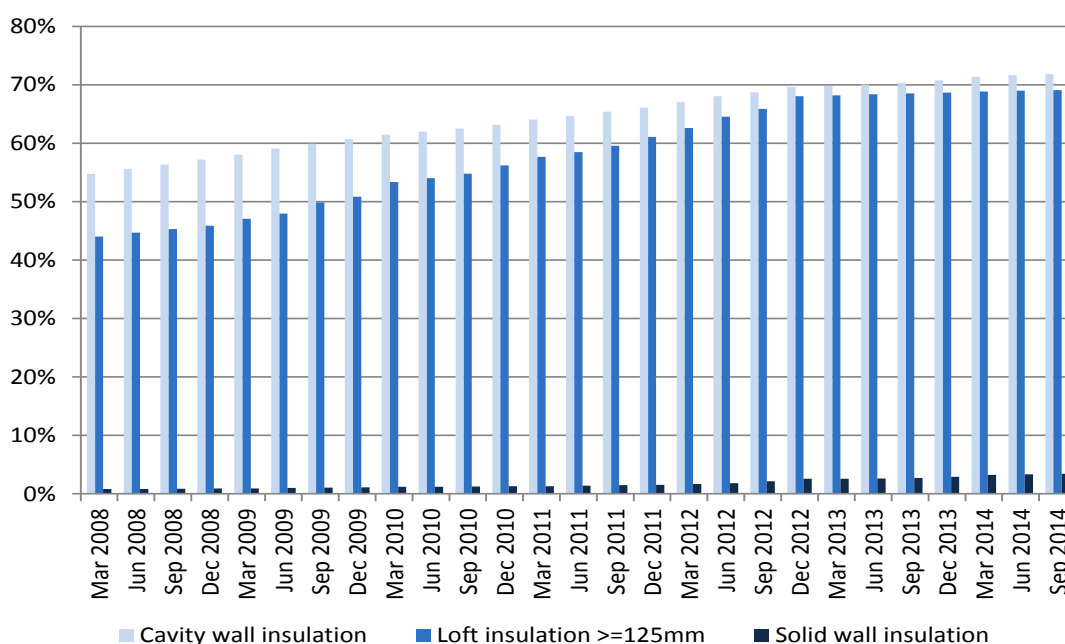


Table: Percentage of properties with insulation in Great Britain, March 2008 to September 2014

1.5 Green Deal measures

Green Deal statistics are currently only available from DECC at a regional level. A breakdown by administrative area should be available for the next quarterly release, due on 19/03/14. Data below taken from <https://www.gov.uk/government/statistics/green-deal-energy-company-obligation-eco-and-insulation-levels-in-great-britain-quarterly-report-to-september-2014> Table 1.7).

	Green Deal Assessments	Households	GD Assessments per 1,000 households
England	288,999	22,542,903	12.8
North East	16,177	1,145,559	14.1
North West	51,658	3,046,753	17.0
Yorkshire and Humber	38,004	2,262,423	16.8
East Midlands	30,067	1,935,710	15.5
West Midlands	44,047	2,332,802	18.9
East	24,657	2,484,620	9.9
London	22,857	3,383,918	6.8
South East	37,077	3,638,436	10.2
South West	24,455	2,312,682	10.6

Green Deal Assessments lodged by region, up to 30th September 2014

2.0 LAEP HECA REPORT 2013-15

2.1 Boiler replacement scheme (2013)

In December 2012 DECC awarded over £2 million to the LAEP to tackle fuel poverty as part of a nationwide local authority competition. This was the third largest grant awarded, despite stiff competition and a significantly oversubscribed fund, demonstrating the advantage of working in partnership for the benefit of all local residents.

Funding was shared between fourteen district and borough councils across the two counties and was invested in new boilers, heating systems and insulation to help vulnerable residents keep warm and well in winter.

Installations began in January 2013 and were completed by end April 2013, an average of 50 per local authority area. The success of the project was the result of fantastic team work by officers from LAEP councils who worked hard to identify eligible households and deliver measures within the very tight timescales.

"I recently had a new boiler installed after having no heating or hot water for a number of years. For the first time my 18 month old daughter can have a proper hot bath rather than kettles in the sink."

Chesterfield resident

In total the LAEP delivered **729 energy efficiency measures** to households, comprising:

- 511 'G' rated boilers were replaced with 'A' rated boilers
- 143 new heating systems were installed
- 85 properties received loft and/or cavity wall insulation
- Many properties received enabling works
- 36 boilers and heating systems repaired
- 2 renewable energy systems were installed in off gas properties

These measures translate into energy bill savings for householders in the region of **£220,000 per year**. This equates to approximately **7,140 tonnes of CO² per year**

2.2 Health and housing research project (2013)

Evaluation of the boiler scheme outlined in 2.1 revealed that around 38% of assisted households included someone suffering from a long term health condition made worse by a living in a cold home. It also found that many fuel poor households were not eligible for the fully funded affordable warmth element of ECO either because they were not on eligible benefits or because the works required on their heating systems were non-standard or extensive.

In an extension to the original boiler replacement project and to further investigate these issues, DECC approved a request from the LAEP to use project underspend to identify and assist fuel poor households with a long term health condition.

This work was carried out from May to September 2013 across Notts and Derbys. Evaluation showed that out of 29

"My husband and I had both been in hospital, very poorly, and came out when the snow was bad. It was too cold to stop here; we could only come home once the boiler had been replaced."

Newark resident

households assisted, 25% met the ECO affordable warmth benefits eligibility criteria but were still unable to have energy efficiency improvement works carried out without making a personal contribution of between £1000 and £1500. This is due to the non-standard nature of the works required and the impact this has on the amount of ECO funding available. Non-standard works include:

- Properties with only secondary heating such as coal fires or electric bar heaters
- Solid fuel (coal) back boilers, wood burners or LPG boilers in off gas properties
- Partial and full sets of storage heaters.

The research highlighted the inability of the current ECO affordable warmth programme to fully fund energy efficiency measures for some of the most vulnerable householders, leaving some of them paying up to 30% of their income on fuel bills.

2.3 Derbyshire Healthy Home programme (2014 - ongoing)

The results of the health and housing research project (2.2) have been applied to a new health and affordable warmth programme. Derbyshire Public Health have commissioned the LAEP to develop and deliver the 'Derbyshire Healthy Home' programme across the county, providing **£188k** revenue funding per year for two years.

The programme is combining information on health, housing and income at a household level to target fuel poor householders with long term health conditions made worse by a cold home. The aim is to reduce the incidence of Excess Winter Deaths and the cost to the NHS of the impact of cold related illnesses, particularly 'non-elective' (emergency) admissions to A&E. Due to data protection and patient privacy issues, GP surgeries will write to target households inviting them to contact the LAEP project team for assistance.

Whilst accurate targeting should ensure that most householders assisted are eligible for affordable warmth ECC (HHCRO), some homes will require additional funding to enable improvements to go ahead, as outlined in 2.2. DECC agreed in January 2014 to allow LAEP to carry forward the final balance from the original boiler replacement project funds to top up capital works associated with this project; Derbyshire's share is around £114k.

National Grid has recognised the project's innovative approach with an award of **£40k** to establish a hardship fund to further assist vulnerable householders

The project will assist households from February 2015 to August 2016. Outcomes will be rigorously monitored and evaluated and if successful funding is likely to continue, albeit at a lower level. DECC is very interested in this approach in terms of shaping delivery of fuel poverty and health related support services through local authorities.

2.4 Potential for a health and housing project in Nottinghamshire (2015)

The Nottinghamshire LAEP authorities are looking closely at how the Derbyshire Public Health project develops and will invest their share of the underspend referred to in 2.3 (around £90k), to address fuel poverty and health related issues in a similar way.

Exploratory discussions with Nottinghamshire Public Health and CCGs in the county demonstrate a desire to collaborate on this issue. Provisional project ideas involve working closely with CCGs to engage one GP Practice in each district who would identify their most resource intensive patients with cold-sensitive long term conditions. Existing resources would enable councils to address the affordable warmth needs of at least 5 households identified in this way, even if none were HHCRO eligible. Rigorous

monitoring by the CCG on the impact of interventions on health outcomes would be needed to justify the release of funding to enable project continuity.

2.5 LAEP Green Deal Pioneer Places (2013-14)

In January 2013, the LAEP successfully bid to DECC to fund a proposal to create demand for the Green Deal across Nottinghamshire and Derbyshire. Four LAEP councils received funding to run pilot Green Deal projects each council targeted promotions at different housing types:

- Amber Valley Borough Council (Derbys): The private rented sector
- Chesterfield Borough Council (Derbys): Mixed hard-to-treat properties
- Newark and Sherwood District Council (Notts): Off gas homes, high council tax
- Rushcliffe Borough Council(Notts): Large homes, old boilers, range of finance options

	Green Deal Assessments		Green Deal Plans	
	Target	Completed	Target	Completed
Amber Valley	100	27	50	0
Chesterfield	100	26	50	0
Newark	100	11	50	8
Rushcliffe	100	72	50	50

The project evaluation report was issued in July 2014. In total, 136 properties had a Green Deal Assessment carried out compared with an initial target of 400. The project aimed to convert 50% of assessments into plans and achieved 43% (58 plans). The lower than expected results were influenced by:

- Low levels of public awareness about the Green Deal
- Slow return of assessments to householders leaving no time to offer plans within project time frame
- The Golden Rule not being met due to vague estimates in the Assessments and higher than expected installation costs due to 'other works'.

Keeping customers engaged throughout the complex process proved very difficult; Green Deal Assessors sometimes proved unreliable and this led the project to question the effectiveness of the Green Deal Assessor verification process.

2.6 LAEP ECO scheme development (2013)

In early 2013 the LAEP considered establishing an area wide ECO scheme, to provide residents in private sector housing with a reliable offer from a trustworthy source in a similar way to the Warmstreets scheme that the LAEP set up under CERT. Two comprehensive briefings were produced for managers outlining the opportunities and options available.

One option LAEP considered was to develop a local not-for-profit intermediary or energy agency which would maximise ECO funding drawn into the area. It would be sustained by turning local knowledge, housing data and referral networks into high quality leads for the obligated parties in return for a referral fee. With the utilities under pressure to discharge their ECO obligations as cost effectively as possible, the efficiencies resulting from engaging with 14 councils through the LAEP network should also be reflected in a good offer for LAEP residents.

Endorsing or promoting the offer from any utility to residents requires a tendering process to identify a partner. As a first and informal step in this selection process, the

seven largest energy utilities were invited to a LAEP meeting in July 2013 to outline what they could offer a two county partnership. British Gas, SSE, EON, Scottish Power and EDF attended and outlined their priorities to the LAEP.

Unfortunately it became clear that the focus of all utility companies at this stage in the first ECO phase was external solid wall insulation in areas of concentrated social housing due to the potential for the largest carbon savings; there was very little on offer in terms of loft and cavity wall insulation or heating installations in the private sector.

Cuts in ECO targets later in 2013 undermined this potential funding stream so the LAEP put these plans on hold.

2.7 LAEP Green Deal Communities bid (2013-14)

DECC launched a new £20m Green Deal Communities scheme for local authorities in late July 2013 to help households benefit from the Green Deal on an area basis; this quadrupled to £80m in the autumn.

Based on its success detailed in 2.1, the LAEP decided to apply for this funding with the understanding that its previous intentions to engage Green Deal and ECO Provider(s) outlined above would be incorporated into these new plans.

The meeting with utilities referred to in 2.6 was also used to help develop a LAEP bid to this fund. As outlined, the utilities' focus was on social housing where they could bank carbon as cheaply as possible through high volumes and high take up. However, there was some potential for a LAEP scheme for private sector 'right to buys' to be incorporated into their broadly social housing schemes. Unfortunately none had a good offer for SWI for one-off private sector homes.

The LAEP submitted a final bid in December 2013 for over £2m on behalf of 14 district councils and Derbyshire and Nottinghamshire County Councils, for a retrofit scheme in each districts to treat a total of 500 properties. In line with DECC guidance the majority of funding was to subsidise the cost of SWI to both attract matched ECO funding from energy utility companies and to ensure that the remaining cost payable by the householder was eligible for Green Deal finance. The key element of the bid was to combine effective community engagement with evidence-based targeting using LAEP's housing and householder database.

"LAEP's bid was ambitious and well designed and would have helped each council to roll out private sector solid wall insulation schemes in their areas."

Jane Thomas, Private Sector Housing Manager, Chesterfield

This involved a very significant commitment of LAEP resources, including extensive efforts to establish a framework of ECO providers/contractors to deliver the scheme through either Efficiency East Midland's existing framework and through a tender placed by the LAEP on the public sector procurement platform, Source Derbyshire. The latter proved very difficult to achieve as it was obviously not possible to realistically define, or confirm, the total value of the tender contract prior to receiving funding.

64 proposals were submitted in total and unfortunately the LAEP bid was unsuccessful. Feedback from DECC indicated that in particular they did not have confidence that an ECO provider had been secured to deliver the scheme.

2.8 The LAEP Communications Service (ongoing)

The community focused communications service is funded by an optional £1500 p.a. subscription per authority. The service provides advice and information on energy efficiency, sustainable energy and affordable warmth directly to communities, schools, local authority staff, businesses and the general public on behalf of the LAEP.

The Communications Service has been collectively procured by Marches Energy Agency (MEA) through Service Level Agreements (SLA) since 2009 and provides a level and quality of delivery that would have been unaffordable for individual councils. Fifteen LAEP authorities participated between 2013 and 2015.

A core service provides:

- **A public facing website** www.everybodys-talking.org providing information on energy efficiency, sustainable energy, affordable warmth and community activity
- **A twitter account** with more than 170 followers
- **Monthly E-Bulletins** sent to more than 300 people representing more than 85 community groups and around 100 public and third sector organisations
- An **'Ask Me a Climate Question' Service** which allows community groups to request up to half a day's desk-based research from MEA. The service received 24 enquiries in 2013-14 and 18 by 6th Feb 2015
- LAEP annual **Eco Open Homes Event** aims to inspire householders to make eco improvements to their homes by visiting others who have already done so. In March 2013, 12 homes and other buildings in the area open their doors to more than 90 visitors; in 2014, 325 people visited 17 properties and the event is planned again for May 2015. The event has its own website: www.everybodys-talking.org/ecohomes

An additional tailored service enables councils select additional services which best meet their needs; the most



popular is visits by the **Fantastic Home, a mobile energy efficiency**

exhibition, three times during the year to offer energy efficiency advice at community fairs, fetes, festivals, market days and busy shopping areas (see photos). Other activities have included presentations at Landlord Forums, workshops at community conferences, workshops for local authority staff, and briefings for elected members. In 2013-14, 1424 people engaged with the Fantastic Home vehicle.

MEA also seeks funding for other projects in the area and during 2013-14 secured funding totally £28,130 for other energy efficiency focused work in the area.



2.9 Looking Ahead 2015-17

LAEP plans and aspirations during the next HECA period:

- Deliver, monitor, improve and evaluate Derbyshire Warm Homes programme with a view to secure continued revenue funding for staff beyond the current project time frame of September 2016. The LAEP will further engage with the CCGs in Derbyshire to demonstrate the impacts of affordable warmth interventions on health outcomes and costs, aiming to secure NHS funding in future for preventative support for high risk patients.
- Design, agree and secure funding and support for a Nottinghamshire health and housing programme, working closely with CCG and Public Health colleagues.
- Strive to offer affordable warmth support to a larger proportion of vulnerable fuel poor households not just those with existing health conditions, through innovative funding and partnership arrangements, building on the success and expertise gained through the health and housing programmes.

For further information about the contents of this report, please contact:

Jane Thomas, Private Sector Housing Manager - Chesterfield Borough Council,
jane.thomas@chesterfield.gov.uk, 01246 345708

or

Rina Jones, LAEP Manager, Rina.jones@derbyshire.gov.uk, 01629-536130

CHESTERFIELD BOROUGH COUNCIL HECA REPORT 2013-2015.

Home Energy Conservation Action Plan Progress Report - February 2013 - 15

Action Plan Achievements to Date – Appendix 1

MEASURES CHESTERFIELD BOROUGH COUNCIL HAS TAKEN TO RESULT IN SIGNIFICANT ENERGY EFFICIENCY IMPROVEMENTS IN RESIDENTIAL ACCOMMODATION ACROSS THE BOROUGH				
Action	Improve baseline data and targeting of activity			
Detail	Delivery Agency	Resource	Timing	Outcome
<p>Purchase UNO Database and software to record energy efficiency data at household level</p> <p>Populate UNO database with energy efficiency information taken from;</p> <ul style="list-style-type: none"> • Energy Performance Certificates • Building Regulations notifications (part L) • Warm Zones surveys • Council Stock data <p>Establish a collective baseline of information across the LAEP area</p>	<p>LAEP Partnership</p>	<p>DECC Transitional Funding</p>	<p>By 31st March 2013</p>	<p>UNO Software purchased and installed</p> <p>EPC & Warm Zone data captured</p> <p>Purchase by LAEP of further EPC updates proposed EPC updates</p> <p>Building Regulation information not available yet</p> <p>Council Stock identified</p> <p>UNO Licence not renewed for April 2015 as LAEP data group concerned about limitations on versatility of software and options for further development.</p> <p>Data held securely as belongs to each district council, not to UNO.</p>

Update UNO software and analyse results by wards, tenure and construction type	LAEP Partnership Chesterfield Home Improvement Agency	DECC Transitional Funding Chesterfield Council	By 31 st March 2013 Ongoing Review Annually	Results used to produce data needed to support Derbyshire Healthy Home project
Use MOSAIC socio economic data to improve area profiling and targeting of energy efficiency initiatives	LAEP Partnership Chesterfield Home Improvement Agency	DECC Transitional Funding Chesterfield Council	By 31 st March 2013 Ongoing	MOSAIC data found to be useful for predicting area trends but inaccurate at postcode level.
Action	Promote Take Up of Individual Energy Efficiency Measures			
Detail	Delivery Agency	Resource	Timing	Outcome
Provide Energy Efficiency Advice and information across the Borough <ul style="list-style-type: none"> • Phone line email advice • Home visits • Attend Promotional events 	Chesterfield Home Improvement Agency Energy Advice Officer (0.4FTE)	Chesterfield Council	Ongoing NB Part time Energy Adviser (0.4FTE) retired June 2014 – ongoing work carried out by other HIS staff as post not	<u>Requests for Home Energy Advice Received</u> 2013/14 - 200 2014/15 Funding secured & Home Thermometers with Stay Warm Advice given out to vulnerable householders <u>Promotional Events</u> Party in the Park July 2013 & July 2014 Library Events 4 per year Front line Worker Information Day

			yet refilled	March 2014 (50 attendees) Market Square Promotion Day March 2015 Marches Energy at 'EatnTreat' Healthy living Event at Holmebrook School April 2015
Promote the use of co-operative fuel switching and purchase by advertising local schemes	Chesterfield Home Improvement Agency Energy Advice Officer (0.4FTE)	Rural Action Derbyshire	Ongoing	
Action	Promote Access to Funding for Energy Efficiency Measures			
Detail	Delivery Agency	Resource	Timing	Outcome
Promote Green Deal and ECO opportunities to local home owner (including refurbish the Fantastic Homes Bus and hold 3 promotional events a year)	Chesterfield Home Improvement Agency and Marches Energy Agency	DECC Transitional Funding	Refurbish & hold 1 event by 31 st March 2013 then ongoing	Bus Refurbished Marches attended Party in Park 2013 & 2014 Market Square Promotion & assisted with some library events
Deliver Green Deal Pioneers Pilot offering free Green Deal Assessment to 100 'able to pay' private householders across the Borough	Warm Zone / Chesterfield Home Improvement Agency	DECC Transitional Funding	By 31 st March 2013	26 Assessments Completed – no Green Deal Plans produced Generally Green Deal not found suitable for families most interested in having work carried out due to high loan interest rate (7%) and typical cost

				of work which exceeded local contractor rates. Often the only measures the loan would support under the 'Golden rule' were not those that would have most impact on fuel consumption and energy bills.
Provide loft and cavity wall insulation for households in fuel poverty that missed the CERT deadline for assistance	Chesterfield Home Improvement Agency and Warm Zone	DECC Transitional Funding	By 31 st March 2013	6 Measures installed – generally householders already had adequate loft insulation or not suitable for standard measures e.g. had attic bedroom
Install replacement boilers and upgrade heating systems to at least 50 fuel poor households Install at least 4 full heating systems in fuel poor households without central heating Carry out home energy assessments with every installation	Chesterfield Home Improvement Agency	DECC Transitional Funding	By 31 st March 2013	FILT Warm at Home funding value £20,000 secured jointly by CBC HIS with Metropolitan Housing Association to help fund home energy conservation measures to vulnerable fuel poor households across Derbyshire in 2015 – average grant £250 max.
Replace inefficient G rated Boilers with efficient A rated boiler for vulnerable households in fuel poverty but not eligible for ECO funding	Chesterfield Home Improvement Agency	Chesterfield Council Home Repairs Assistance Loan	Ongoing	2013/14 - 13 heating systems repaired or replaced – value £60,000 2014/15 (to date) 25 heating systems repaired or replaced – value £90,689 (includes 2 homes without central heating system) FILT grants, total value £8,1000, secured to reduce the loan in 12 of the above cases where the home owner has a health condition exacerbated by excess cold - In most cases work included replacement of obsolete radiators and or system upgrades including room

				thermostat and TRVs. New systems installed where either no heating or to replace individual electric heaters
Support the development of a low cost emergency loan scheme to help non ECO eligible, low income households afford urgent heating repairs	Chesterfield Credit Union	Chesterfield Credit Union Derbyshire Health & Housing Group	Secure further funds by April 2014	No further funding secured due to conflicting bids for Housing & Health grants.
Action	Improving Energy Efficiency in the Private Rented Sector			
Detail	Delivery Agency	Resource	Timing	Outcome
Work with Private Landlords and Tenants to improve energy efficiency in the private rented sector to ensure that all rented properties achieve an EPC rating E or above by 2016 by; <ul style="list-style-type: none"> Promoting Green Deal and ECO schemes Using regulatory powers under the Housing Act 2004 Housing Health & Safety Rating System (HHSRS) to reduce the risk of excess cold in private rented accommodation 	Chesterfield Council Private Sector Housing Team DASH Landlord Accreditation Scheme Local Landlord Forum	Chesterfield Council DASH Landlord Accreditation Scheme Private Landlords	Ongoing Review Annually	Statutory notices served to address excess cold caused by either heating breakdown or lack of adequate fixed heating 2013/14 2014/15 DASH Accreditation scheme continues Local landlord Forum held jointly with NEDDC May 2014
Action	Improving Energy Efficiency in the Council Housing Stock			
Detail	Delivery	Resource	Timing	Outcome

	Agency			
All homes to meet the Governments Decent Homes Standard, which includes having a reasonable degree of thermal comfort (adequate insulation and a programmable heating system)	Chesterfield Housing Services	Chesterfield Housing Services Capital Programme	By 31 March 2015	All Council homes met the Decent Homes Standard at 31 st March 2015
Carry out analysis of properties of non traditional construction to determine whether further investment is sustainable	Chesterfield Housing Services	Chesterfield Housing Services Capital Programme	By April 2014	Structural Survey of Non Traditional Housing Stock complete March 2014. Report to Cabinet approved investment to majority of stock in July 2014, with a detailed Option Appraisal to be carried out into the Unity Housing Stock prior to a decision being reached. Option Appraisal to be carried out in 2015/16
Carry out installation of external wall insulation to sustainable properties of non-traditional construction	Chesterfield Housing Services	Chesterfield Housing Services Capital Programme	By April 2014 and Ongoing	External Wall Insulation scheme to Wimpey No Fines commenced in March 2015 at Grangewood and Old Whittington with further programmes agreed for 2015 – 2018. First phase of works to Cornish and BL8 properties tendered and let with works to commence in May 2015. Further programmes agreed for 2015-2018
Replace back boilers with high efficiency boilers	Chesterfield Housing Services	Chesterfield Housing Services Capital Programme	By April 2014 and Ongoing	£4million heating replacement programme carried out in 2014/15 with further programmes on going
Action	Cross Tenure Area Based and Street by Street Schemes			
Detail	Delivery Agency	Resource	Timing	Outcome
Complete installation of external wall insulation to Hard to Treat Homes in Mastin Moor across all tenures	Chesterfield Housing Services Private	Chesterfield Housing Services Capital	By December 2013	Insulation of all Council owned Homes completed. Insulation offered to private home owners by contractor at same rate

	Contractor	Programme and CSECO funding (tbc)		
Tender for a Green Deal/ECO partner to work with Chesterfield Council Housing Services to maximise funding and deliver cross tenure schemes	Chesterfield Housing Services	Green Deal Providers ECO funding	By June 2013	<p><u>Number of ECO Obligation Measures Taken Up since beginning of ECO to 30th September 2014</u> 1,675, measures - equates to 35.5 ECO measures per 1000 households</p> <p>Tender for single Green deal/ECO partner not feasible due to rapid changes on availability of scheme. List of ECO approved contractors working locally and willing to help individual householders within reasonable timescales maintained ECO letter and DECC information leaflet sent to all enquires received by CBC Home Improvement Service. Enquiries contacted after 6 weeks to check progress with ECO.</p> <p>ECO Top up loans available to HRA eligible low income householders where the ECO fund would not cover the cost of all work required e.g. additional pipework or associated electrical work</p>
Develop and deliver cross tenure schemes for CESCO areas (Areas in 15% most deprived areas of England determined by the Indices of multiple deprivation)	Chesterfield Housing Services & Green Deal/ECO Partner	Green Deal Providers ECO funding	By April 2015	<p>See comment on Council stock areas above</p> <p>Financial Inclusion Pilot work in Poolsbrook and Barrow Hill completed. CBC HIS staff assisted with delivery</p>

				and promotions of services and attended one day advice sessions in each area. Further areas to be targeted later in 2015.
Develop and deliver area based insulation schemes for Hard of Treat properties outside CESCO areas	Chesterfield Housing Services	Green Deal Providers ECO funding	By April 2015	<p>Private contractor A undertook their own initiative in the New Whittington area in 2013/14 - number of 'able to pay' households undertaking measures not known</p> <p>Private contractor B currently offering external wall insulation to individual home owners under the DECC Green Deal funding voucher scheme. 5 HRA eligible households living in 'hard to treat' homes have secured a voucher and HRS loans have been approved to meet the remaining cost of work.</p>

Home Energy Conservation Act
Revised Action Plan March 2015 – 17

MEASURES CHESTERFIELD BOROUGH COUNCIL IS TAKING TO RESULT IN SIGNIFICANT ENERGY EFFICIENCY IMPROVEMENTS IN RESIDENTIAL ACCOMMODATION ACROSS THE BOROUGH				
Action	Detail	Delivery Agency	Resource	Timing
Improve baseline data and targeting of activity	Work with LAEP Data Group to evaluate and procure improved data recording and manipulation software and build on data secured to date using UNO software.	LAEP Partnership	LAEP Partnership	Secure by 31 st March 2015 - then ongoing
	To complete a new Private Sector Housing Stock Condition Survey to update data on Decent Homes, Disrepair and Affordable Warmth	Chesterfield Private Sector Housing Services	Chesterfield Council	By 31 st December 2015
Promote Take Up of Individual Energy Efficiency Measures	Provide Energy Efficiency Advice and information across the Borough <ul style="list-style-type: none"> • NEA accredited Staff training on fuel switching and Home energy conservation to staff appointed under the new Private Sector Housing team structure. 	Chesterfield Home Improvement Agency & Housing Services	Chesterfield Council	Ongoing

	<ul style="list-style-type: none"> • Phone line email advice • Home visits • Attend Promotional events • Participate in future Financial Inclusion projects 	Tenancy Support		
	Establish new cross tenure Energy Officer post	Chesterfield Council Housing Services	Chesterfield Council	Report to Cabinet October 2014 agreed to support the post. Job Description to be prepared and recruitment to be complete by August 2015
	Promote the use of co-operative fuel switching and purchase by advertising local schemes	Chesterfield Home Improvement Service	Rural Action Derbyshire	Ongoing
Promote Access to Funding for Energy Efficiency Measures	Promote Green Deal and ECO opportunities to local home owner (including refurbish the Fantastic Homes Bus and hold 3 promotional events a year)	Chesterfield Home Improvement Service and Marches Energy Agency	DECC Transitional Funding	3 events year
	Support the Derbyshire Healthy Homes project taking referrals for heating & insulation measures	Chesterfield Home Improvement Service	Derbyshire Public Health DECC Transitional Funding (carry over)	Ends August 2016

			National Grid Hardship Fund	
	Promote DECC Green Deal Voucher scheme and facilitate access for low income households living in 'Hard to Treat' homes	Chesterfield Home Improvement Service	DECC Green Deal External Insulation Voucher Scheme	Quarterly release to end of Dec 2015
	Provide CBC Home Repairs Assistance for low income households to fund <ul style="list-style-type: none"> essential heating repairs and upgrades, central heating installation where none exist ECO top ups where work cannot proceed unless essential electrical or other work beyond the a scope of the ECO grant is required to allow the job to be completed (and householder eligible for HRA) 	Chesterfield Home Improvement Service	Chesterfield Council Home Repairs Assistance Loan FILT Warm Homes grants	Ongoing
	Replace inefficient G rated Boilers with efficient A rated boiler for vulnerable households in fuel poverty but not eligible for ECO funding	Chesterfield Home Improvement Agency	Chesterfield Council Home Repairs Assistance Loan FILT Warm Homes Grants	Ongoing
	Support the development of a low cost emergency loan scheme to help non ECO eligible, low income households afford urgent heating repairs	Chesterfield Credit Union	Chesterfield Credit Union Derbyshire Health & Housing Group	Ongoing
	Work with LAEP, the Health Service and other Partner agencies to secure alternative funding routes for future schemes to improve Home	Chesterfield Council LAEP		

	Energy Efficiency and increase Affordable Warmth for households across the borough	Health Service & Public health		
Improving Energy Efficiency in the Private Rented Sector	<p>Work with Private Landlords and Tenants to improve energy efficiency in the private rented sector to ensure that all rented properties achieve an EPC rating E or above by 2016 by;</p> <ul style="list-style-type: none"> • Promoting Green Deal and ECO schemes • Using regulatory powers under the Housing Act 2004 Housing Health & Safety Rating System (HHSRS) to reduce the risk of excess cold in private rented accommodation • Publicised statutory standards for provision of effective heating systems and energy efficiency in the private rented sector and providing landlord advice • Improve information available for landlord on the Council's website 	<p>Chesterfield Council Private Sector Housing Team</p> <p>DASH Landlord Accreditation Scheme</p> <p>Local Landlord Forum</p>	<p>Chesterfield Council</p> <p>DASH Landlord Accreditation Scheme</p> <p>Private Landlords</p>	<p>Ongoing</p> <p>Review Annually</p>
Improving Energy Efficiency in the Council Housing Stock	All homes continue to meet the Governments Decent Homes Standard, which includes having a reasonable degree of thermal comfort (adequate insulation and a programmable heating system)	Chesterfield Housing Services	Chesterfield Housing Services Capital Programme	Ongoing
	Carry out option appraisal of the investment options associated with properties of Unity Construction and agree a programme of investment / disinvestment based on the recommendations	Chesterfield Housing Services	Chesterfield Housing Services Capital Programme	By April 2016
	Carry out installation of external wall insulation to sustainable properties of non-traditional construction	Chesterfield Housing Services	Chesterfield Housing Services Capital Programme	Ongoing to April 2018
	Replace old and inefficient boilers with high efficiency boilers	Chesterfield Housing Services	Chesterfield Housing Services Capital	Ongoing to April 2018

			Programme	
Cross Tenure Area Based and Street by Street Schemes	Develop and deliver cross tenure schemes for CESCO areas (Areas in 15% most deprived areas of England determined by the Indices of multiple deprivation)	Chesterfield Housing Services & Green Deal/ECO Partner	Green Deal Providers ECO funding Financial Inclusion project partners	Ongoing to April 2018
	Develop and deliver area based insulation schemes for Hard of Treat properties outside CESCO areas	Chesterfield Housing Services	Green Deal Providers ECO funding	Ongoing to April 2018